

DIRECTIONS

Straight plc, No1 Whitehall Riverside, Leeds, LS1 4BN

From M62 (eastbound)

Exit at Junction 27 on to the M621. Follow this towards the centre of Leeds. Exit at Junction 3 then merge onto the A653 signposted Central Leeds / Holbeck. Follow road round for 3/4 mile following signs for the airport passing Bewleys hotel on your left onto Neville Street. Continue straight on and you will pass the Hilton hotel on the left. Go under the arches keeping in left hand lane passing the station on your left. Just after turn left at the traffic lights on to Wellington Street. Take the first left after the Queens Hotel then right on to Aire Street. Follow the road and continue through the traffic lights on to Whitehall Road. Pass the Novotel on your left. No 1 Whitehall Riverside is next door, opposite the Primo restaurant and set back from the road overlooking the river. There is parking available in the adjacent car park.

From M62 (westbound)

Exit at Junction 29 and at the roundabout take the 3rd exit onto the M1 (northbound). When the motorway splits at Junction 43 take the M621 branch towards the centre of Leeds. Follow this towards the centre of Leeds. Exit at Junction 3 then merge onto the A653 signposted Central Leeds / Holbeck. Then as per directions from M62 (eastbound).

From M1 (northbound)

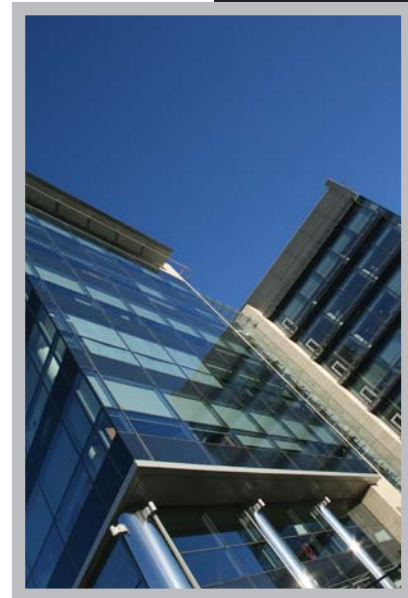
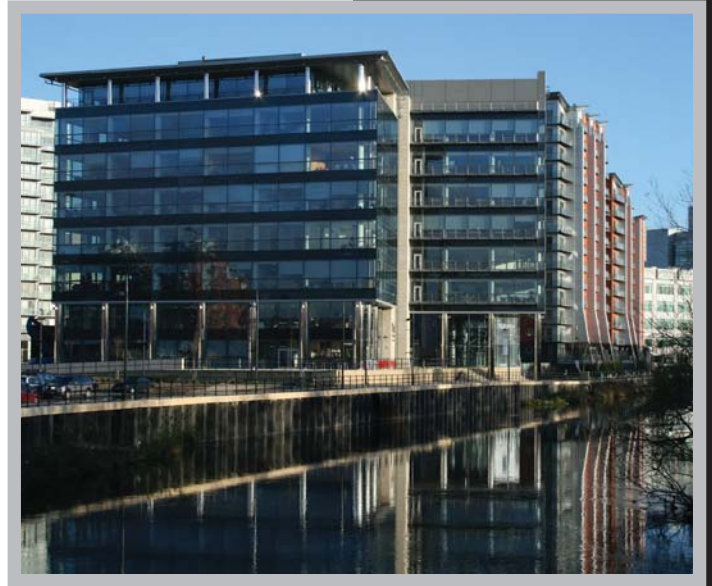
When the motorway splits at Junction 43 take the M621 branch towards the centre of Leeds. Follow this towards the centre of Leeds. Exit at Junction 3 then merge onto the A653 signposted Central Leeds / Holbeck. Then as per directions from M62 (eastbound).

From M1 (southbound)

Exit at Junction 44 and take the 3rd exit (right) onto the A639 and follow the signs to the M621. Follow this towards the centre of Leeds. Exit at Junction 3 then merge onto the A653 signposted Central Leeds / Holbeck. Then as per directions from M62 (eastbound).

From the North

Make your way in towards the centre of Leeds and join the Leeds Inner Ring Road (A58M) and follow it westbound. At the large multi-lane roundabout (Armley Gyratory), take the 1st exit under the railway. Take the 1st left (Wortley Lane). At the next roundabout take the first exit onto Spence Lane and bear right onto Whitehall Road. Pass under the railway and cross the river and canal. No 1 Whitehall Riverside is on your right hand side, opposite the Primo restaurant and set back from the road overlooking the river. There is parking available in the adjacent car park.



Straight plc No1 Whitehall Riverside Leeds LS1 4BN

t: +44 (0) 113 245 2244 f: +44 (0) 113 245 2255 e: info@straight.co.uk i: www.straight.co.uk

PARKING

Straight plc, No1 Whitehall Riverside, Leeds, LS1 4BN

Whitehall Road Car Park

The adjacent Whitehall Road car park is £7.00 all day but £4.50 after 10am and £2.50 after 2pm. However, later in the day it is often full, so if you are unable to find a space the following nearby car park is available:

NCP Car Park, Wellington Place, off Wellington Street, LS1 4AJ

Short stay parking is available here. To get there, follow directions to the new office until you turn on to Wellington Street. Instead of taking your first left on to Aire Street, take your fourth left on to Wellington Place. To get to the office from the car park, walk to the mini-roundabout where you will see the old railway wagon hoist on your right (the old square stone building). Walk towards this and across the retail outlet to Whitehall Road.

Globe Road Car Parks

Further parking is also available on Globe Road where parking costs £3.50 per day. To get to Globe Road, follow directions to the office and carry on down Whitehall Road. Take the first left immediately after the railway bridge and you will come to Globe Road where there are car parks on either side of the road. These car parks are approximately 10 minutes walk to the office and we do not recommend parking here if you are walking alone after dark.

Travelling by train - Directions from Leeds train station

We are just a few minutes walk from Leeds City Station. Exit the ticket barriers into the main hall (Boots on left, WHSmiths on right, Burger King ahead) and turn left down the main concourse. Exit to the left just before Wetherspoons. Cross the road onto the circular paved area opposite and make for the steps down to the riverside path. Follow the riverside path past Whitehall Quays apartments until you reach No 1 Whitehall Riverside.

NOTES

- **Please be aware that Straight plc is located at No 1 Whitehall Riverside, not 1 Whitehall.**
- **Please also note that the main entrance to the building faces the riverside and not the road.**
- **On arrival, please sign in at the main building reception on the ground floor.**



Straight plc No1 Whitehall Riverside Leeds LS1 4BN

t: +44 (0) 113 245 2244 f: +44 (0) 113 245 2255 e: info@straight.co.uk i: www.straight.co.uk

